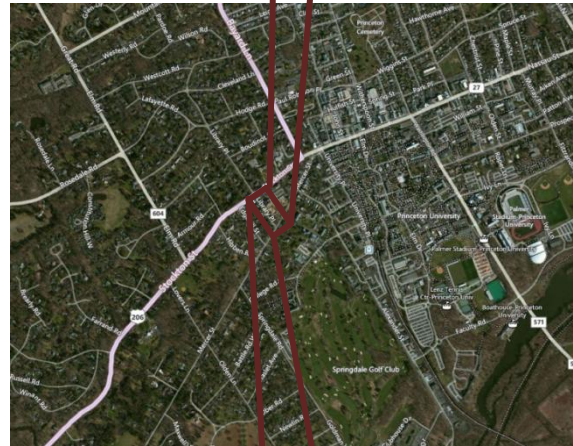


Princeton Theological Seminary Library - Schematic Design

Stephanie Deckard



Location | Princeton, NJ
Size | 99,585 sqft
Stories | 4 + 1 basement



Building

- Concept
- Spaces
- Reference Reading Room
- Café
- Atrium
- South Façade and Grounds

Building

Concept

Spaces

Reference Reading Room

Café

Atrium

South Façade and Grounds

Owner | Princeton Theological Seminary

Design Architects | Einhorn Yaffee Prescott

Architect of Record | EwingCole

Engineers | EwingCole

Building

Concept
Spaces
Reference Reading Room
Café
Atrium
South Façade and Grounds

Owner | Princeton Theological Seminary

“The establishment of The Theological Seminary at Princeton marked a turning point in American theological education.”



1812–2012
Celebrating Two Centuries of Service

Building

Concept
Spaces
Reference Reading Room
Café
Atrium
South Façade and Grounds

Owner | Princeton Theological Seminary

Design Architects | Einhorn Yaffee Prescott

“EYP is an enterprise-based integrated design firm that specializes in sustainable projects for higher education, government, and corporate clients.”

EYP/

Einhorn Yaffee Prescott
Architecture & Engineering P.C.

*Experts in Science and
Technology Environments*

 PRINCETON
THEOLOGICAL SEMINARY

1812–2012
Celebrating Two Centuries of Service

Building

Concept
Spaces
Reference Reading Room
Café
Atrium
South Façade and Grounds

Owner | Princeton Theological Seminary

Design Architects | Einhorn Yaffee Prescott

Architect of Record | EwingCole

Engineers | EwingCole

“We believe that thoughtful design can enhance an organization’s ability to achieve long-term success and improve the quality of life.”

EYP/

Einhorn Yaffee Prescott
Architecture & Engineering P.C.

*Experts in Science and
Technology Environments*

**EWING
COLE**

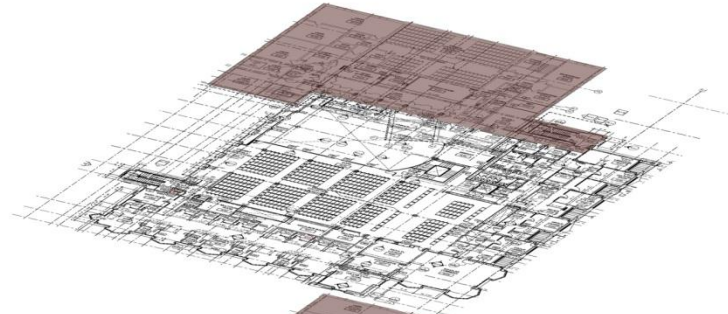
 PRINCETON
THEOLOGICAL SEMINARY

1812–2012
Celebrating Two Centuries of Service

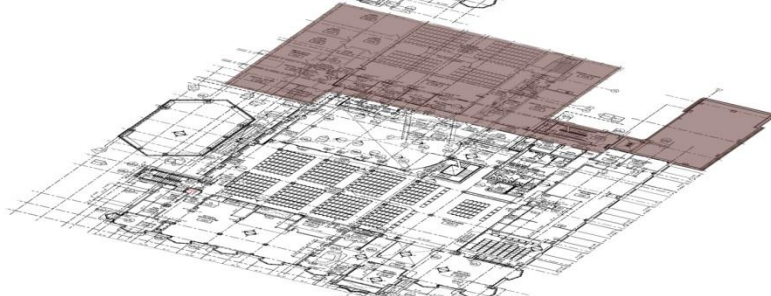
Building

Concept
Spaces
Reference Reading Room
Café
Atrium
South Façade and Grounds

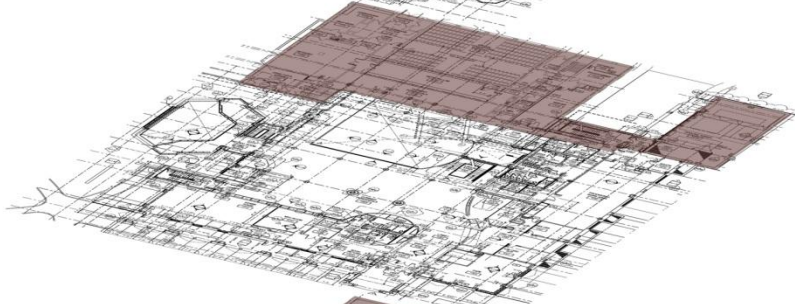
Third



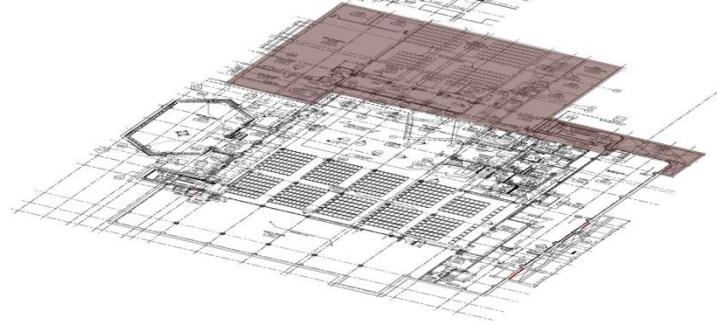
Second



First



Lower



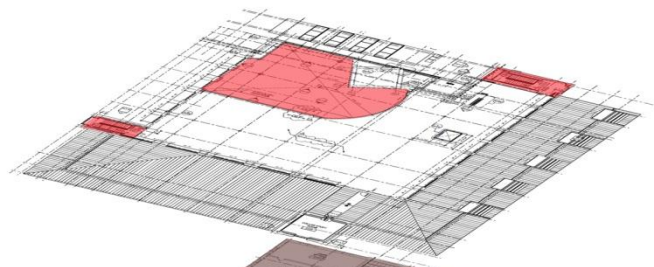
- Existing Luce Building
- Public Space
- Work Rooms
- Stacks/Reading Rooms
- Mech/Elec/Storage Space



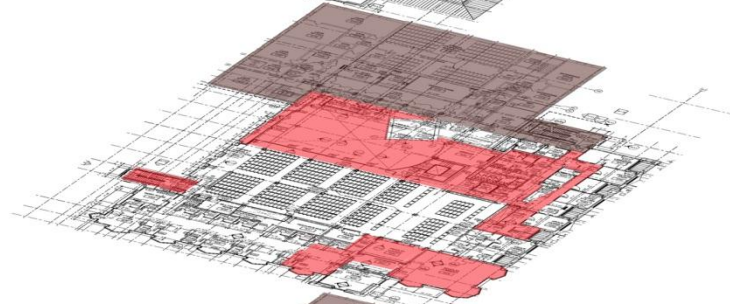
Building

Concept
Spaces
Reference Reading Room
Café
Atrium
South Façade and Grounds

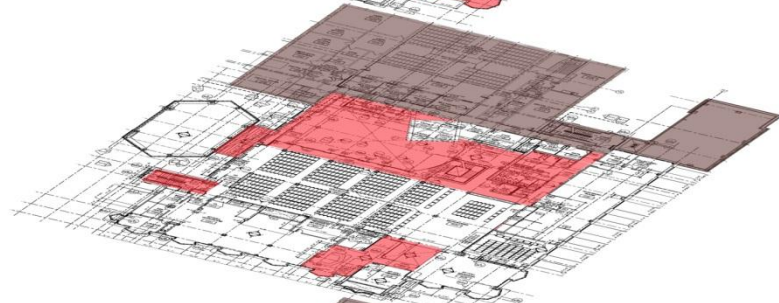
Fourth



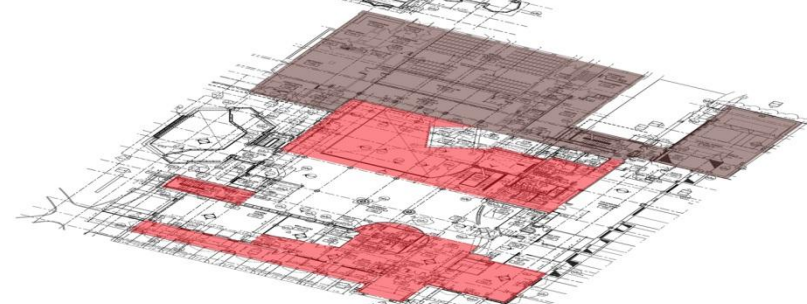
Third



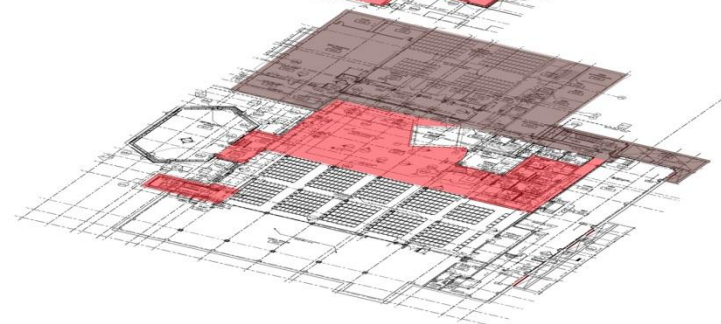
Second



First



Lower



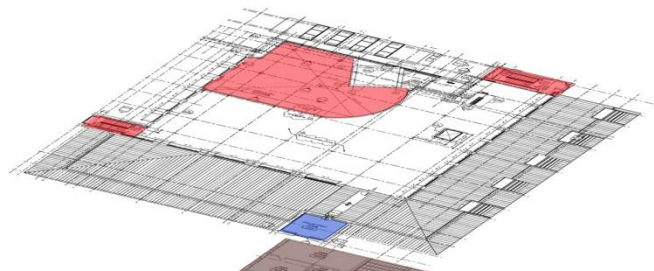
- Existing Luce Building
- Public Space
- Work Rooms
- Stacks/Reading Rooms
- Mech/Elec/Storage Space



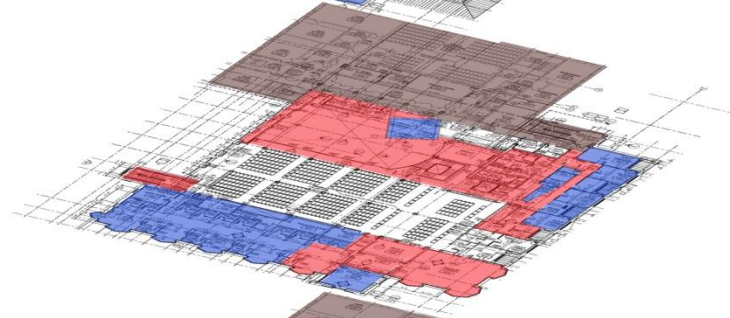
Building

Concept
Spaces
Reference Reading Room
Café
Atrium
South Façade and Grounds

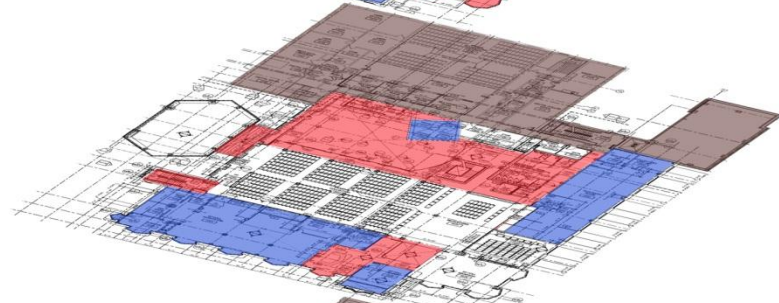
Fourth



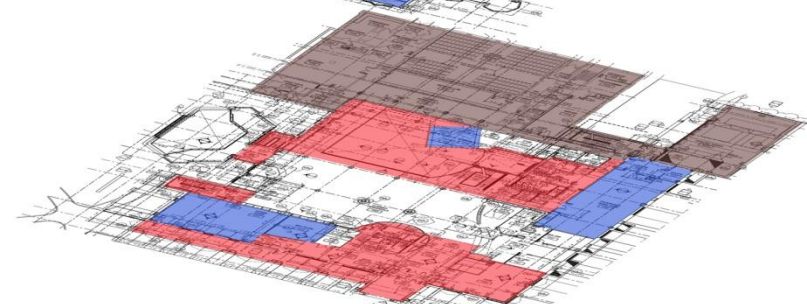
Third



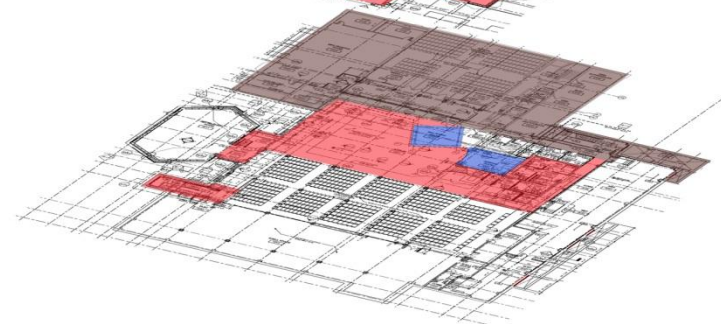
Second



First



Lower



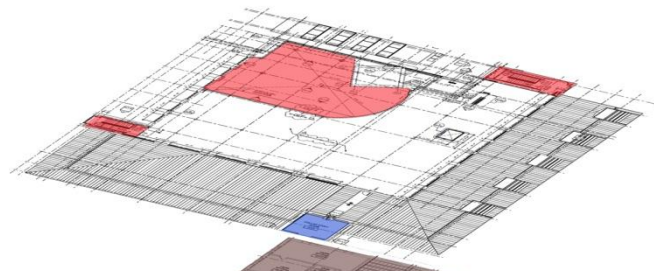
- Existing Luce Building
- Public Space
- Work Rooms
- Stacks/Reading Rooms
- Mech/Elec/Storage Space



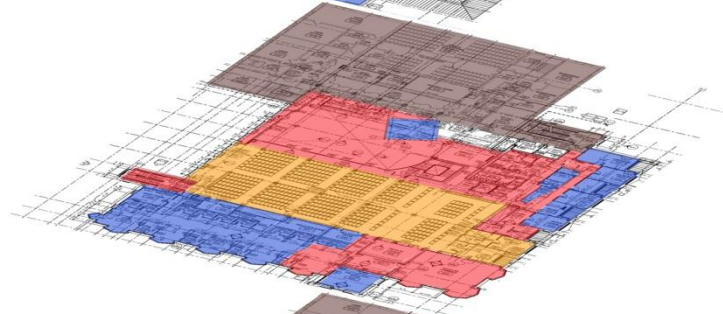
Building

Concept
Spaces
Reference Reading Room
Café
Atrium
South Façade and Grounds

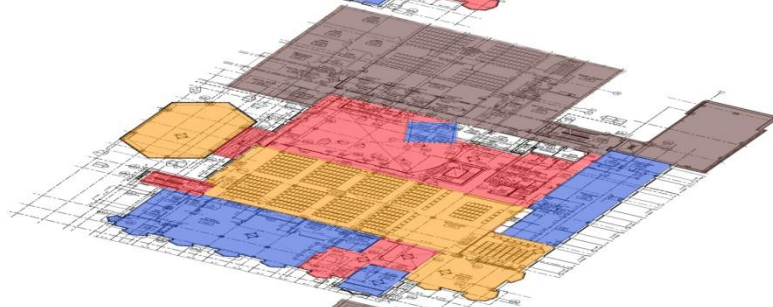
Fourth



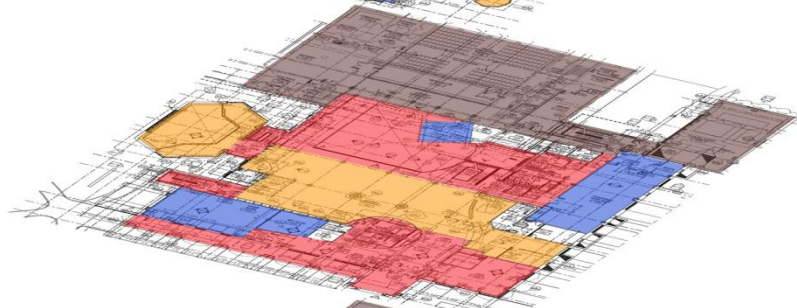
Third



Second



First



Lower



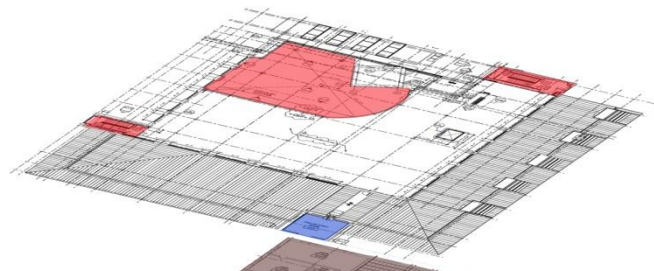
- Existing Luce Building
- Public Space
- Work Rooms
- Stacks/Reading Rooms
- Mech/Elec/Storage Space



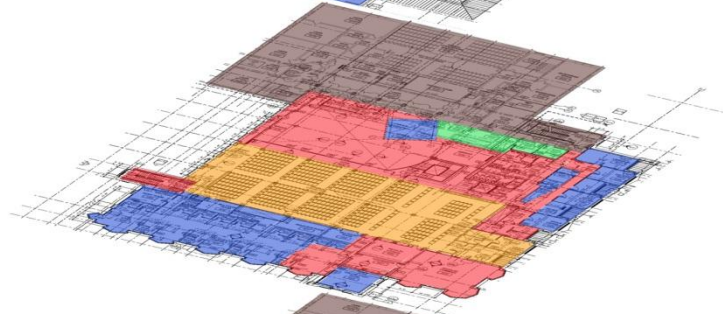
Building

Concept
Spaces
Reference Reading Room
Café
Atrium
South Façade and Grounds

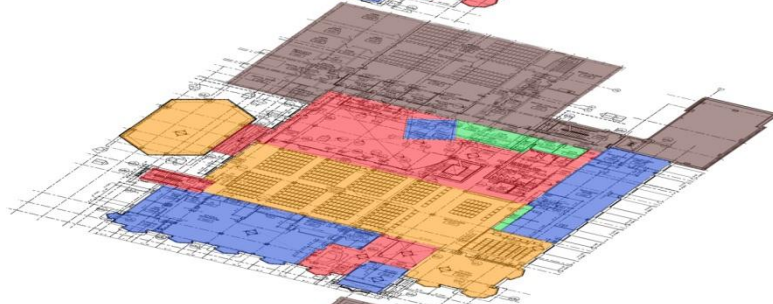
Fourth



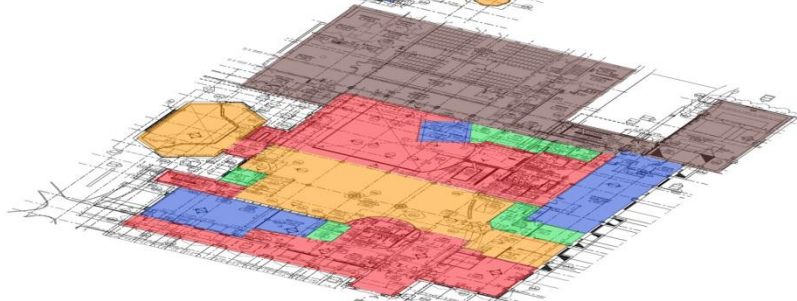
Third



Second



First



Lower



- Existing Luce Building
- Public Space
- Work Rooms
- Stacks/Reading Rooms
- Mech/Elec/Storage Space



Concept

Spaces

Reference Reading Room

Café

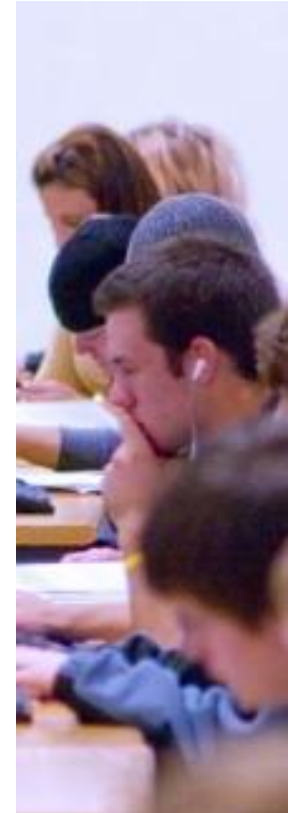
Atrium

South Façade and Grounds

Historical site/Prestigious school

Bright/daylit spaces

Hard working/functional



Jesus spoke to them saying:

“I am the **light** of the
world.”

John 8:12



Concept

Spaces

Reference Reading Room

Café

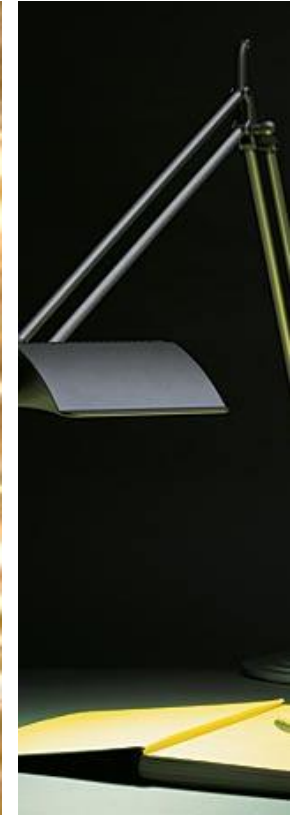
Atrium

South Façade and Grounds

Vertical emphasis/iconic

Sparkle

Task specific



Reference Reading Room

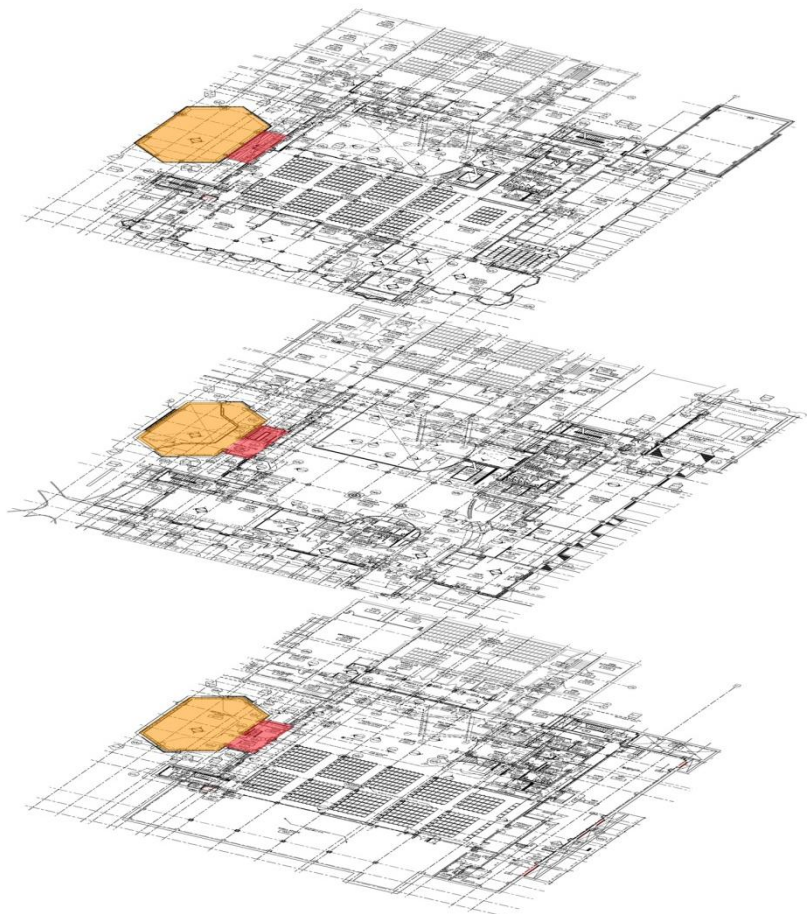
Café
Atrium
South Façade and Grounds

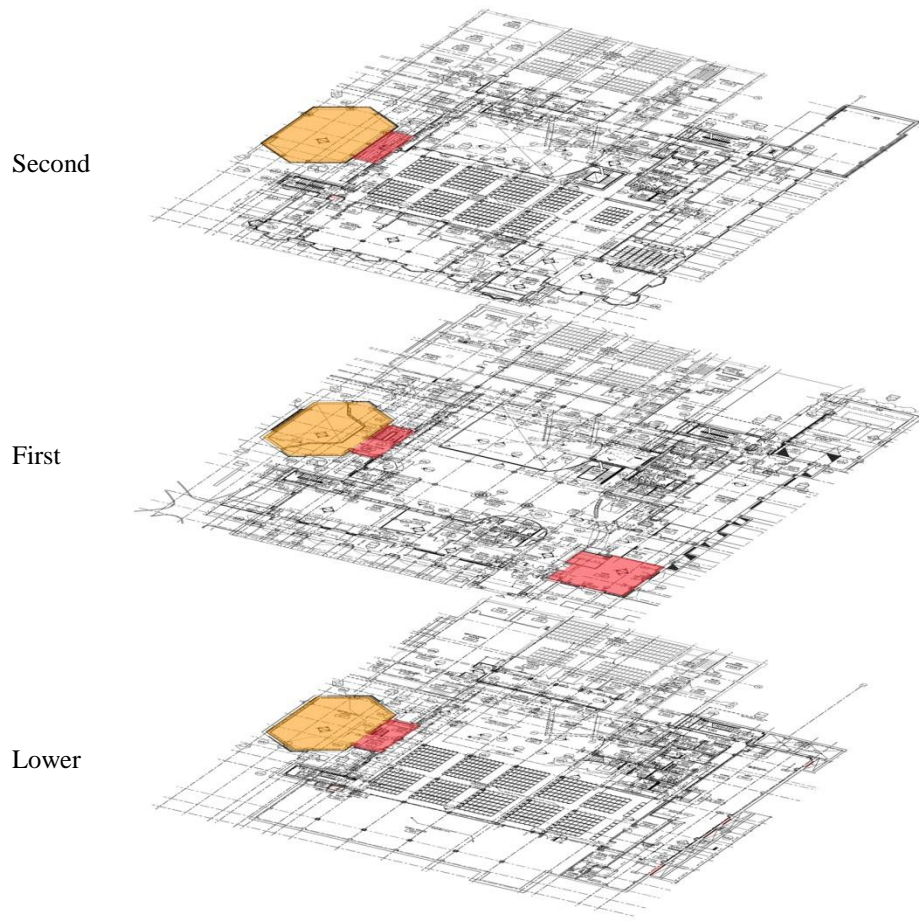
Third

Second

First

Lower





Building
Concept

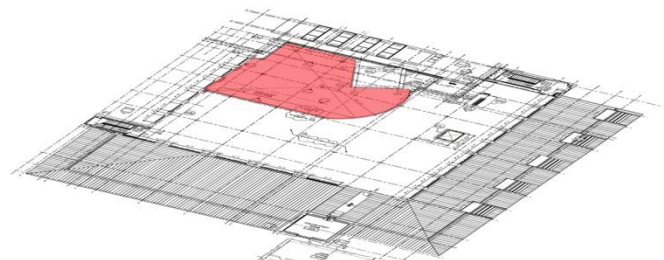
Spaces

Reference Reading Room
Café

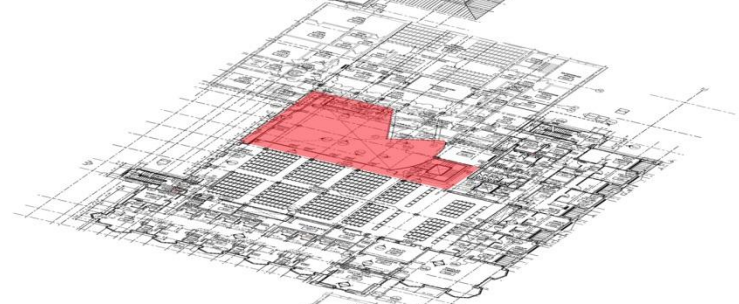
Atrium

South Façade and Grounds

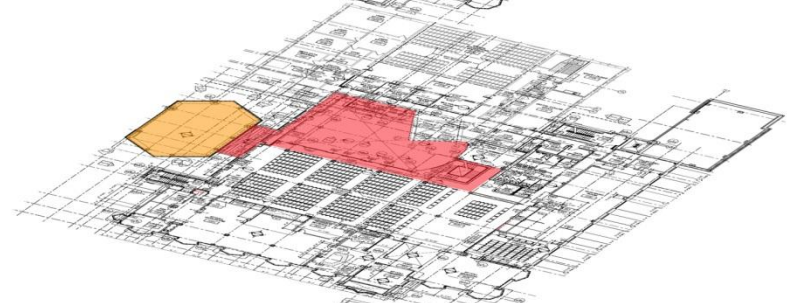
Fourth



Third



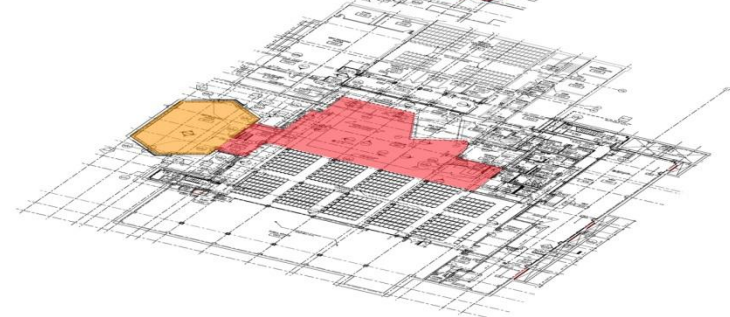
Second



First



Lower

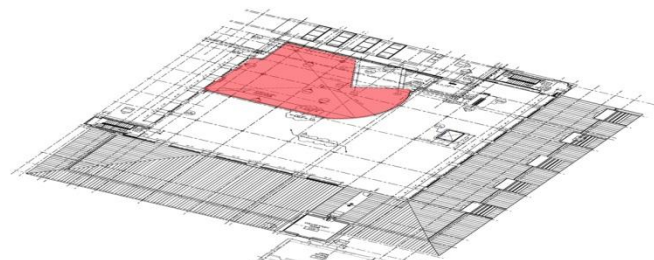


Spaces

Reference Reading Room
Café
Atrium

South Façade and Grounds

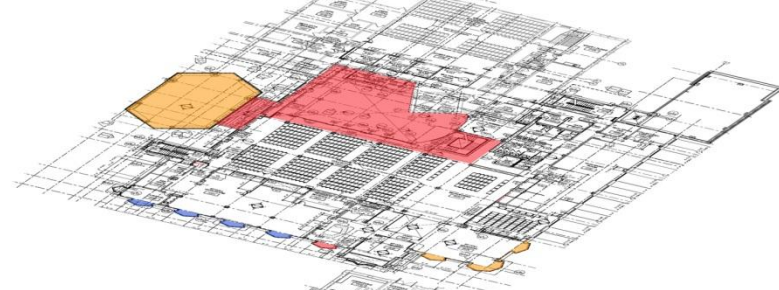
Fourth



Third



Second



First



Lower

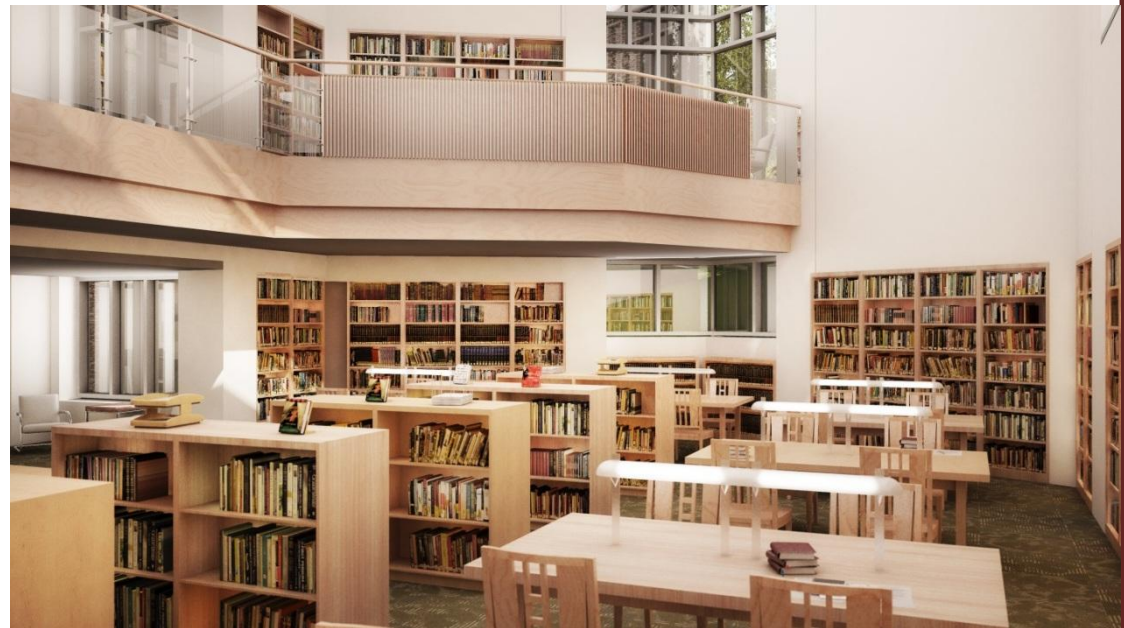


Reference Reading Room

Café
Atrium
South Façade and Grounds

Important Criteria

- Provide ample light for tasks
- Control and utilize daylight
- Create an engaging space



Chandelier

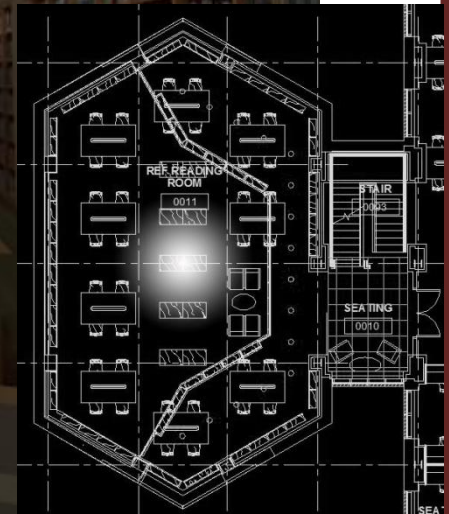
Small pendant
Stack luminaire
Table luminaire
Downlight



Building
Concept
Spaces

Reference Reading Room

Café
Atrium
South Façade and Grounds





Chandelier

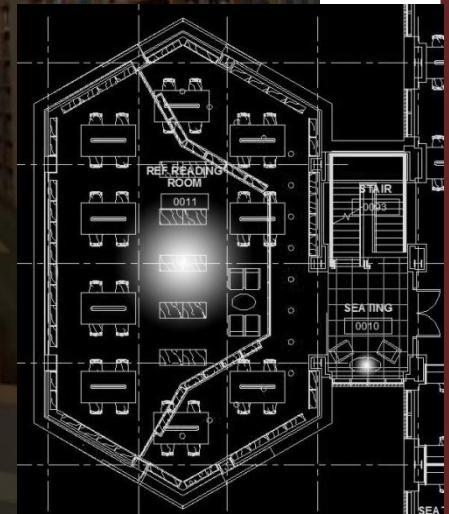
Small pendant

- Stack luminaire
- Table luminaire
- Downlight

Building
Concept
Spaces

Reference Reading Room

Café
Atrium
South Façade and Grounds





Chandelier
Small pendant

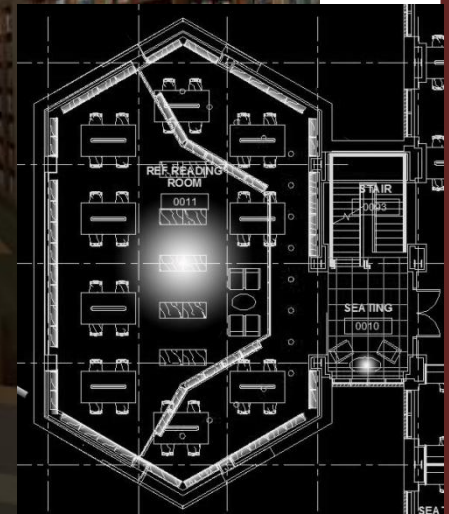
Stack luminaire

Table luminaire
Downlight

Reference Reading Room

Building
Concept
Spaces

Café
Atrium
South Façade and Grounds





Chandelier
Small pendant
Stack luminaire

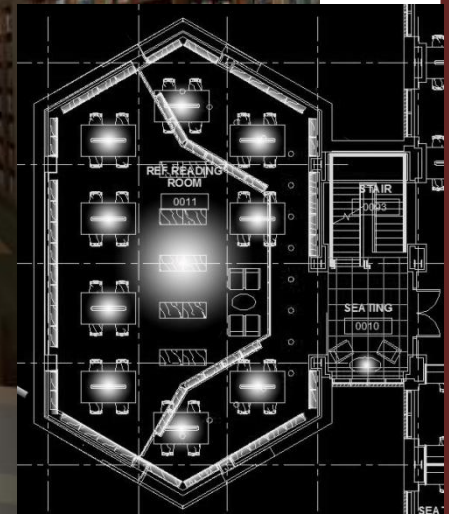
Table luminaire

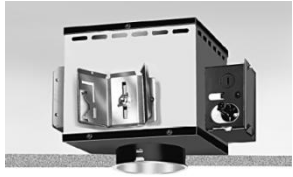
Downlight

Building
Concept
Spaces

Reference Reading Room

Café
Atrium
South Façade and Grounds





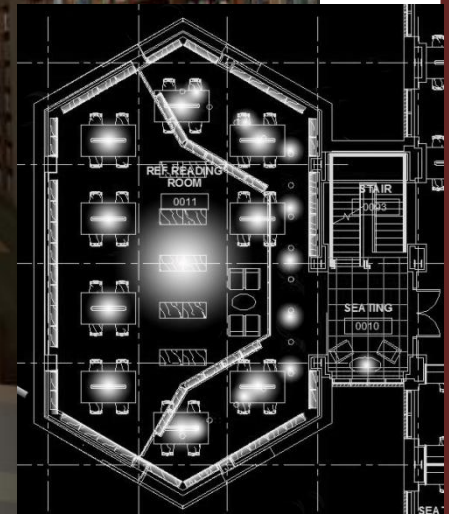
Chandelier
Small pendant
Stack luminaire
Table luminaire

Downlight

Building
Concept
Spaces

Reference Reading Room

Café
Atrium
South Façade and Grounds



Important Criteria

- Create a relaxing atmosphere
- Draw attention to the space
- Adapt scenes to varying daylight

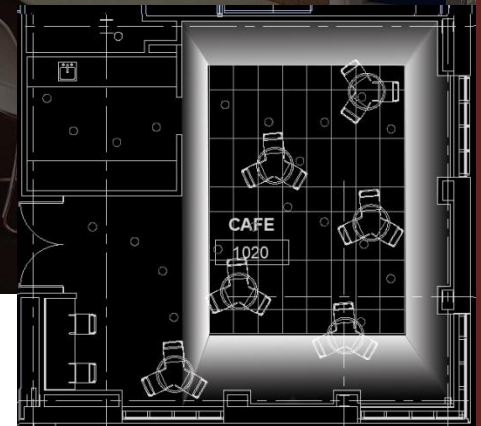


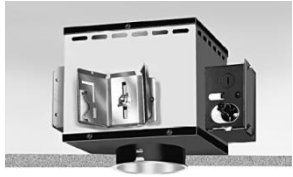


Striplight

Downlight
Colored striplight

Building
Concept
Spaces
Reference Reading Room
Café
Atrium
South Façade and Grounds





Striplight

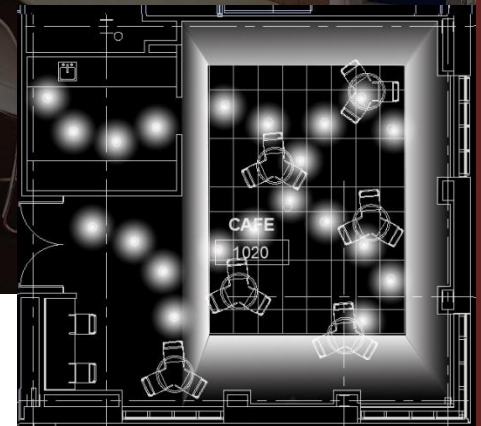
Downlight

Colored Striplight

Building
Concept
Spaces
Reference Reading Room

Café

Atrium
South Façade and Grounds





Striplight
Downlight

Colored Striplight

Building
Concept
Spaces
Reference Reading Room
Café
Atrium
South Façade and Grounds



Atrium

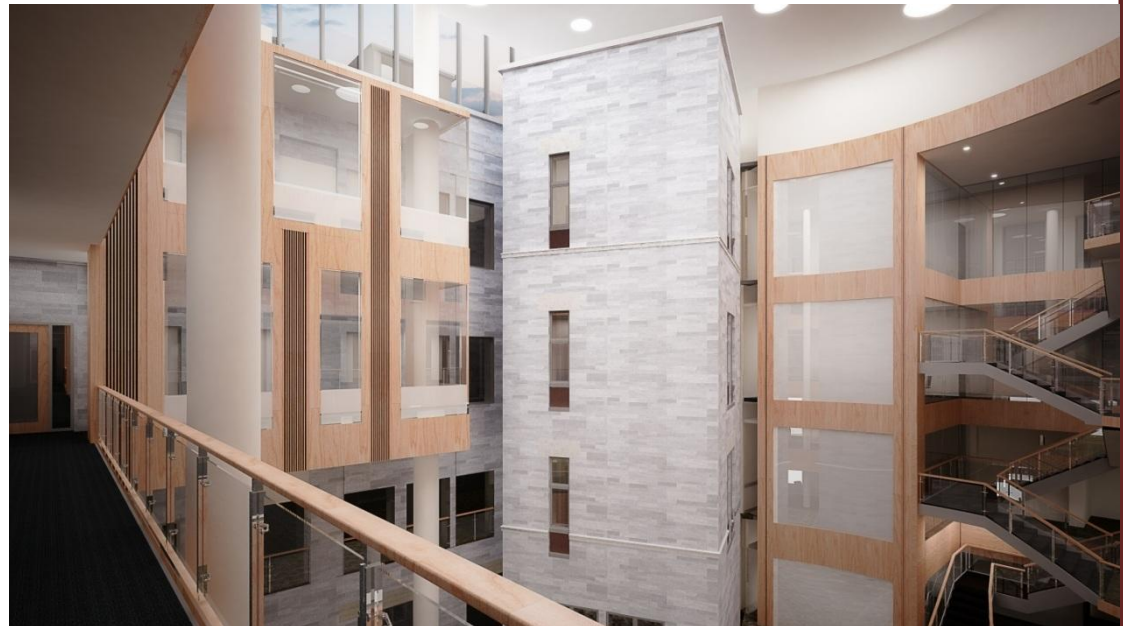
South Façade and Grounds

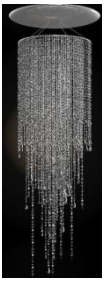
Important Criteria

Create a memorable space

Avoid glare and distractions for readers

Take advantage of daylight





Chandelier

Small pendant
Decorative downlight
In-ground striplight
Downlight

Building
Concept

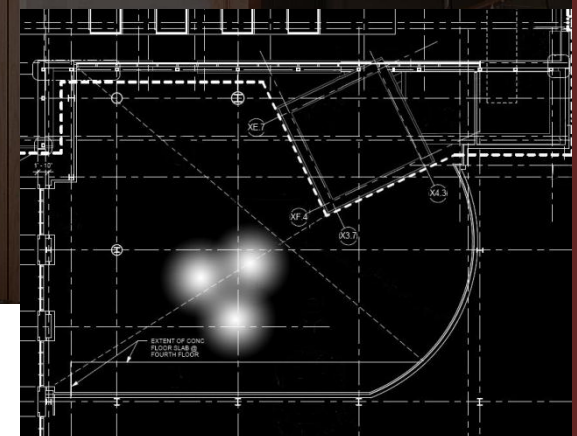
Spaces

Reference Reading Room

Café

Atrium

South Façade and Grounds



Fourth Floor



Chandelier

Small pendant

- Decorative downlight
- In-ground striplight
- Downlight

Building
Concept

Spaces

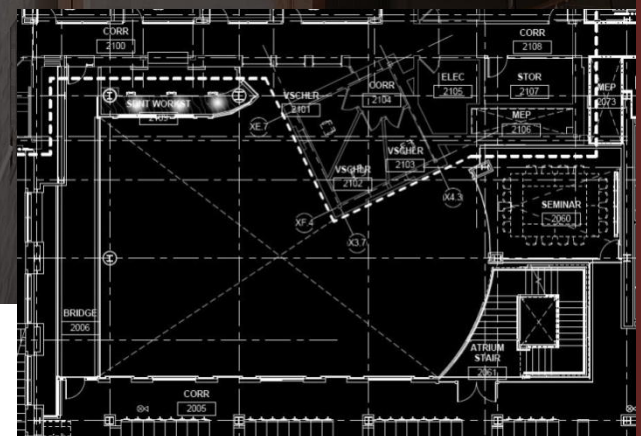
Reference Reading Room
Café

Atrium

South Façade and Grounds



Second Floor





Chandelier

Small pendant

- Decorative downlight
- In-ground striplight
- Downlight

Building
Concept

Spaces

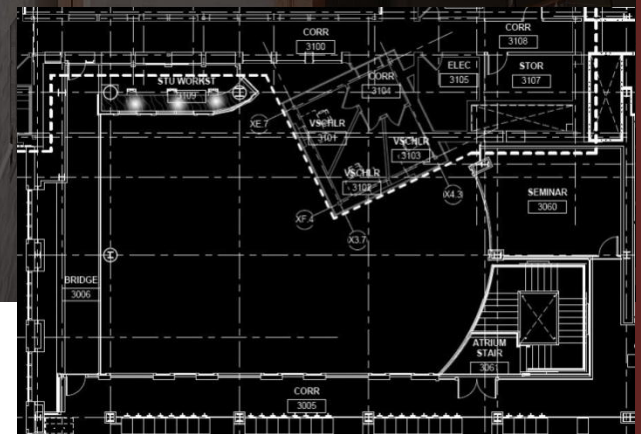
Reference Reading Room
Café

Atrium

South Façade and Grounds



Third Floor





Chandelier
Small pendant

Decorative downlight

In-ground striplight
Downlight

Building
Concept

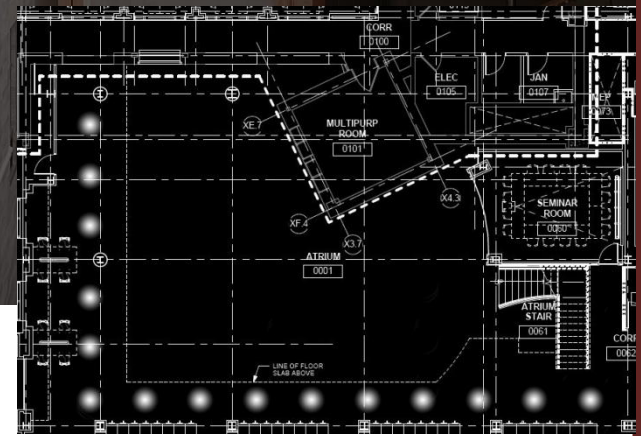
Spaces

Reference Reading Room

Café

Atrium

South Façade and Grounds



Lower Level



Chandelier
Small pendant

Decorative downlight

In-ground striplight
Downlight

Building
Concept

Spaces

Reference Reading Room

Café

Atrium

South Façade and Grounds



First Floor



Chandelier
Small pendant

Decorative downlight

In-ground striplight
Downlight

Building
Concept

Spaces

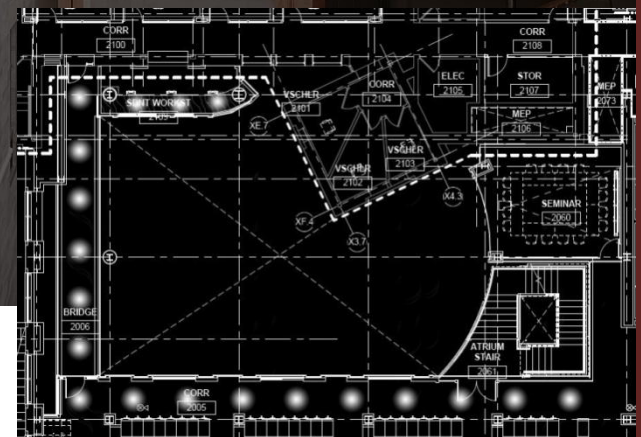
Reference Reading Room
Café

Atrium

South Façade and Grounds



Second Floor





Chandelier
Small pendant

Decorative downlight

In-ground striplight
Downlight

Building
Concept

Spaces

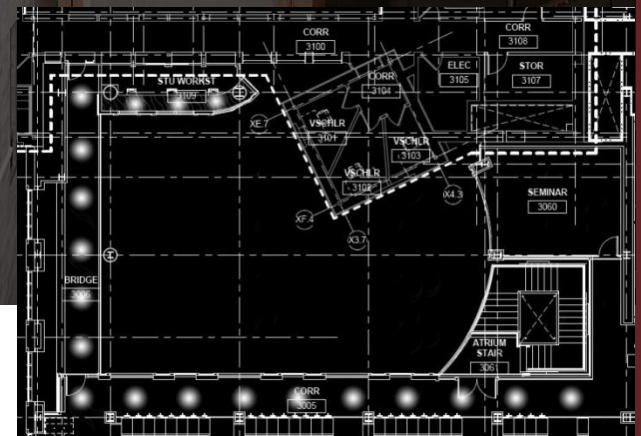
Reference Reading Room
Café

Atrium

South Façade and Grounds



Third Floor





Chandelier
 Small pendant
 Decorative downlight

In-ground striplight

Downlight

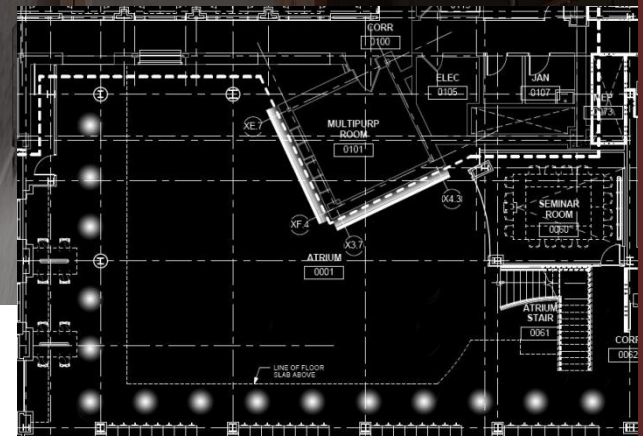
Building
 Concept

Spaces

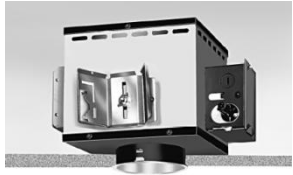
Reference Reading Room
 Café

Atrium

South Façade and Grounds



Lower Level



Chandelier
 Small pendant
 Decorative downlight
 In-ground striplight

Downlight

Building
 Concept

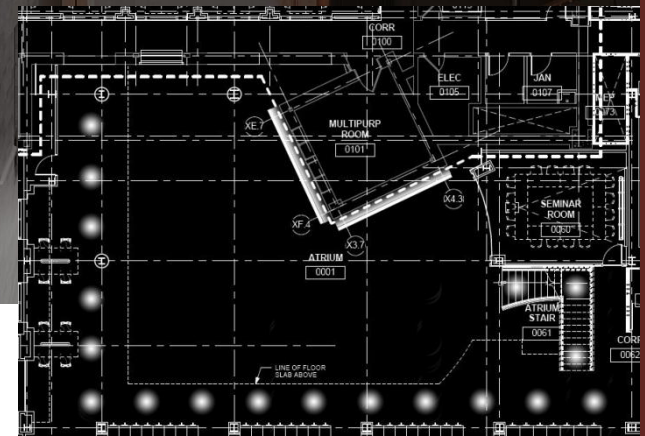
Spaces

Reference Reading Room

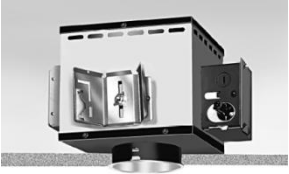
Café

Atrium

South Façade and Grounds



Lower Level



- Chandelier
- Small pendant
- Decorative downlight
- In-ground striplight

Downlight

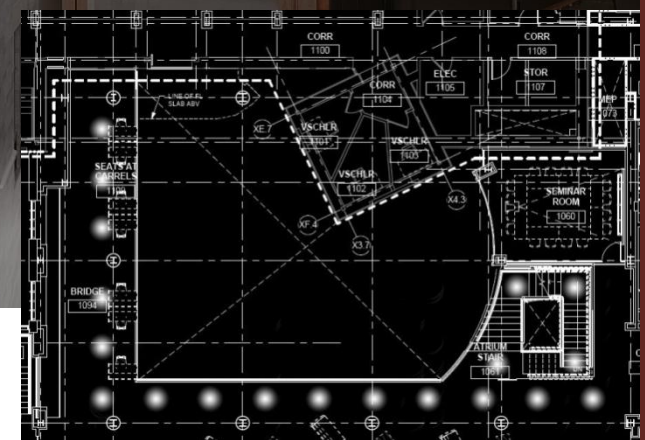
Building
Concept
Spaces
Reference Reading Room
Café

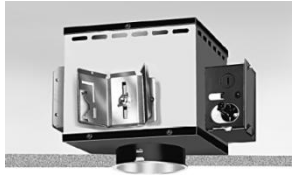
Atrium

South Façade and Grounds



First Floor





Chandelier
 Small pendant
 Decorative downlight
 In-ground striplight

Downlight

Building
 Concept

Spaces

Reference Reading Room

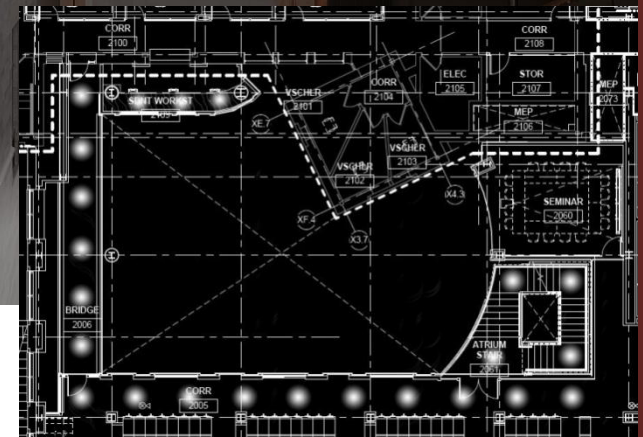
Café

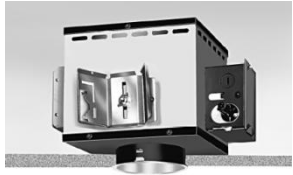
Atrium

South Façade and Grounds



Second Floor





Chandelier
 Small pendant
 Decorative downlight
 In-ground striplight

Downlight

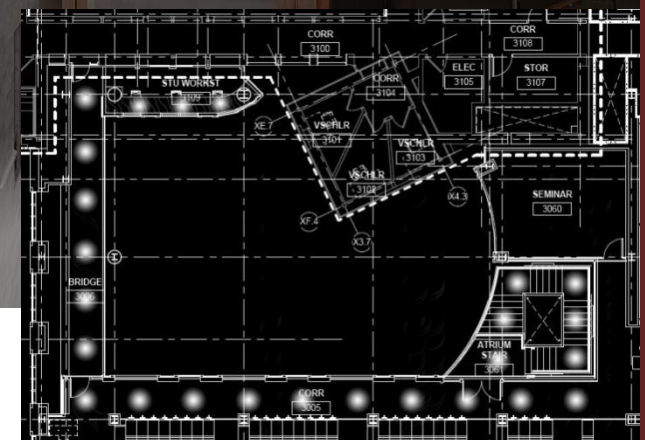
Building
 Concept

Spaces

Reference Reading Room
 Café

Atrium

South Façade and Grounds



Third Floor

South Façade and Grounds

Important Criteria

Be an icon for the school

Lead visitors toward the entrance

Safe light levels for walking at night



South Façade and Grounds

Schemes

Scheme #1 | Decorate

Scheme #2 | Minimize

Scheme #3 | Focus



Striplight

Up/downlight sconce
Small pendant
Bollard

Building
Concept

Spaces

Reference Reading Room

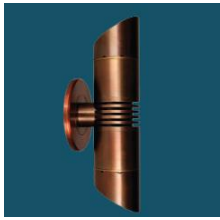
Café

Atrium

South Façade and Grounds



Scheme #1



Striplight

Up/downlight sconce

Small pendant

Bollard

Building
Concept

Spaces

Reference Reading Room

Café

Atrium

South Façade and Grounds



Scheme #1



Striplight

Up/downlight sconce

Small pendant

Bollard

Building
Concept

Spaces

Reference Reading Room

Café

Atrium

South Façade and Grounds



Scheme #1



Striplight
Up/downlight scone

Small pendant

Bollard

Building
Concept

Spaces

Reference Reading Room

Café

Atrium

South Façade and Grounds



Scheme #1 | Decorate



Striplight
Up/downlight sconce
Small pendant

Bollard

Building
Concept

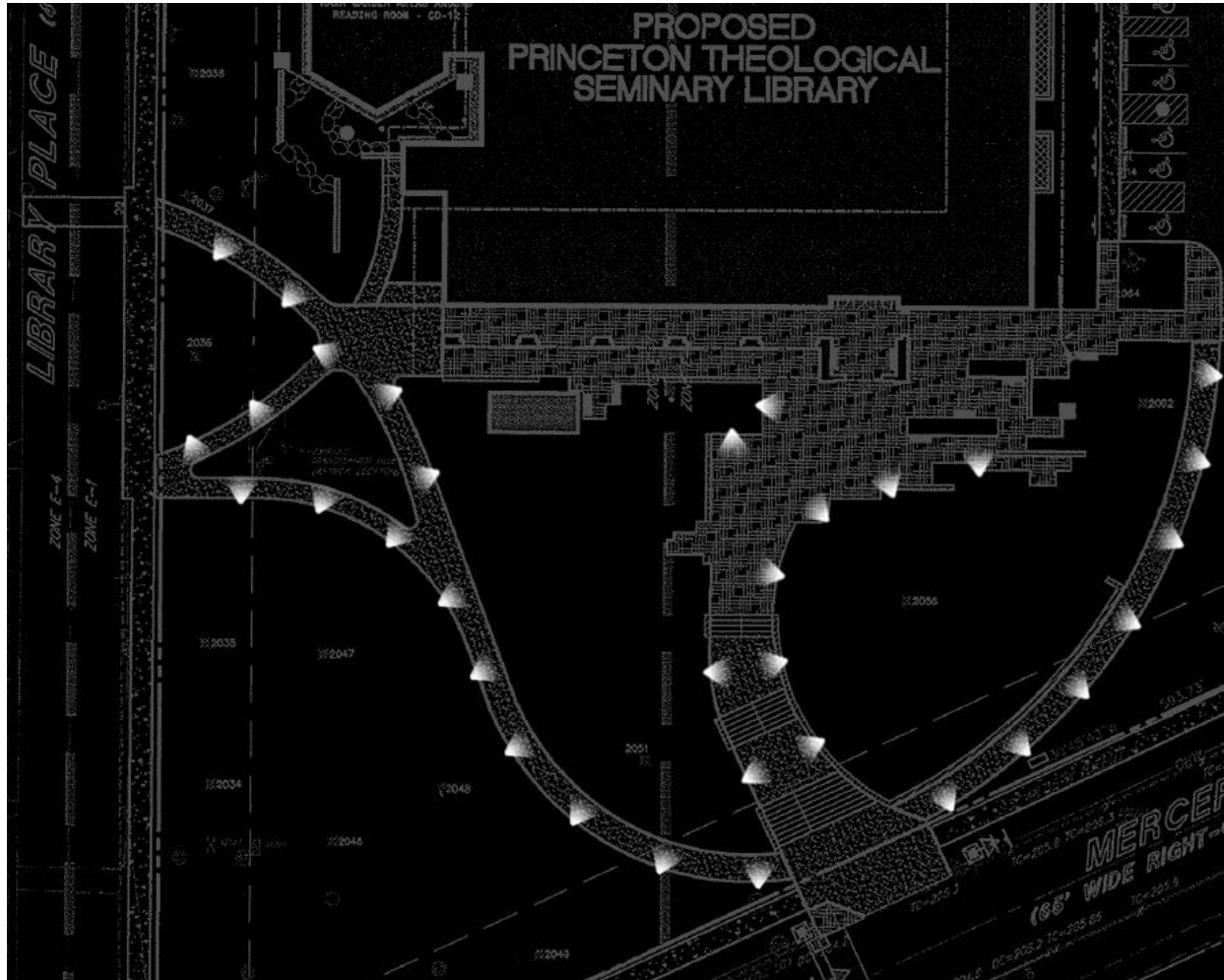
Spaces

Reference Reading Room

Café

Atrium

South Façade and Grounds



Scheme #1



Striplight

In-grade uplight
Recessed linear
Pole Luminaire
Steplight

Building
Concept

Spaces

Reference Reading Room

Café

Atrium

South Façade and Grounds



Scheme #2



Striplight

In-grade uplight

Recessed linear
Pole Luminaire
Steplight

Building
Concept

Spaces

Reference Reading Room

Café

Atrium

South Façade and Grounds



Scheme #2



Striplight

In-grade uplight

Recessed linear
Pole Luminaire
Steplight

Building
Concept

Spaces

Reference Reading Room

Café

Atrium

South Façade and Grounds



Scheme #2



Striplight
In-grade uplight

Recessed linear

Pole luminaire
Steplight

Building
Concept

Spaces

Reference Reading Room
Café
Atrium

South Façade and Grounds



Scheme #2 | Minimize



Striplight
In-grade uplight
Recessed linear

Pole luminaire

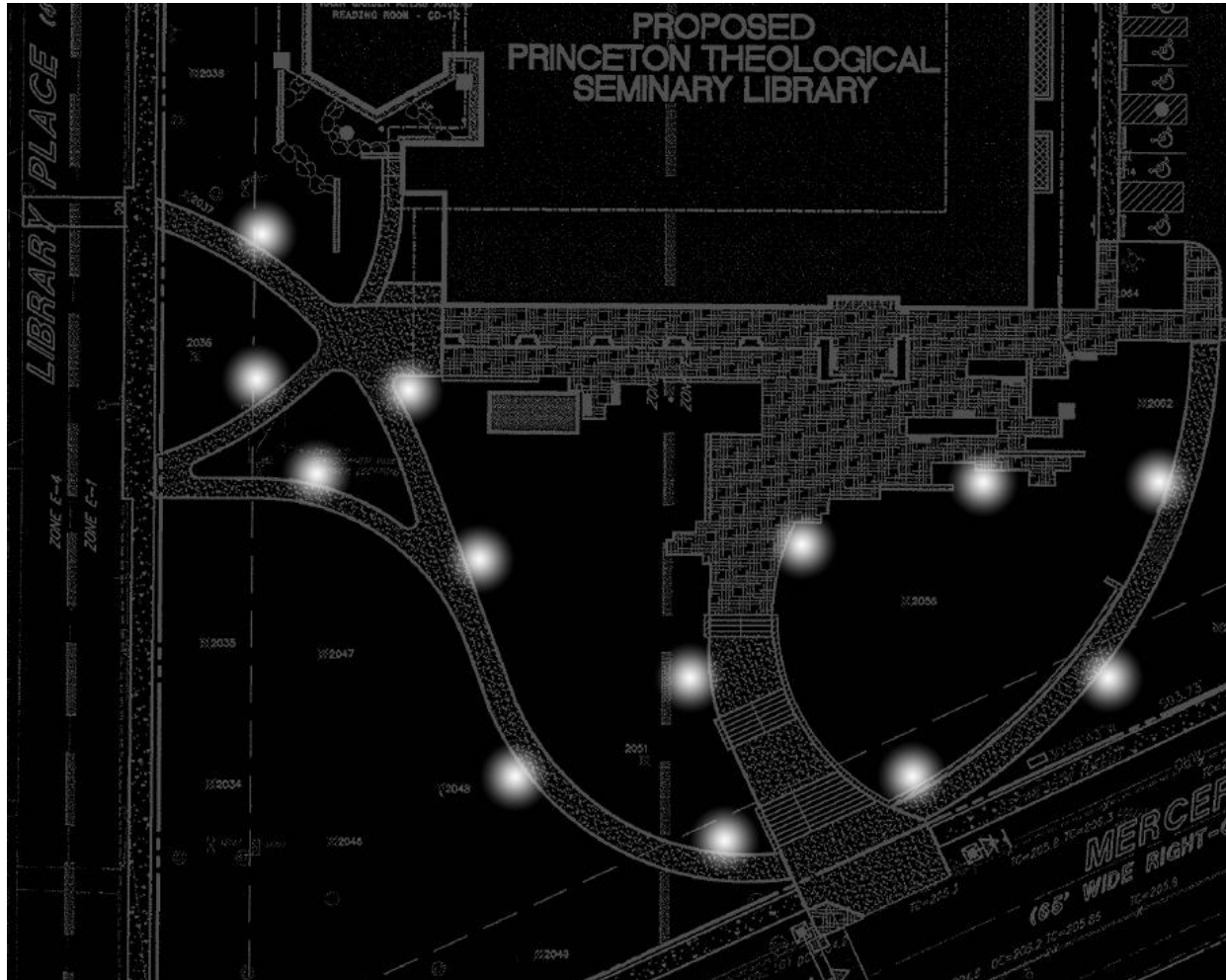
Steplight

Building
Concept

Spaces

Reference Reading Room
Café
Atrium

South Façade and Grounds

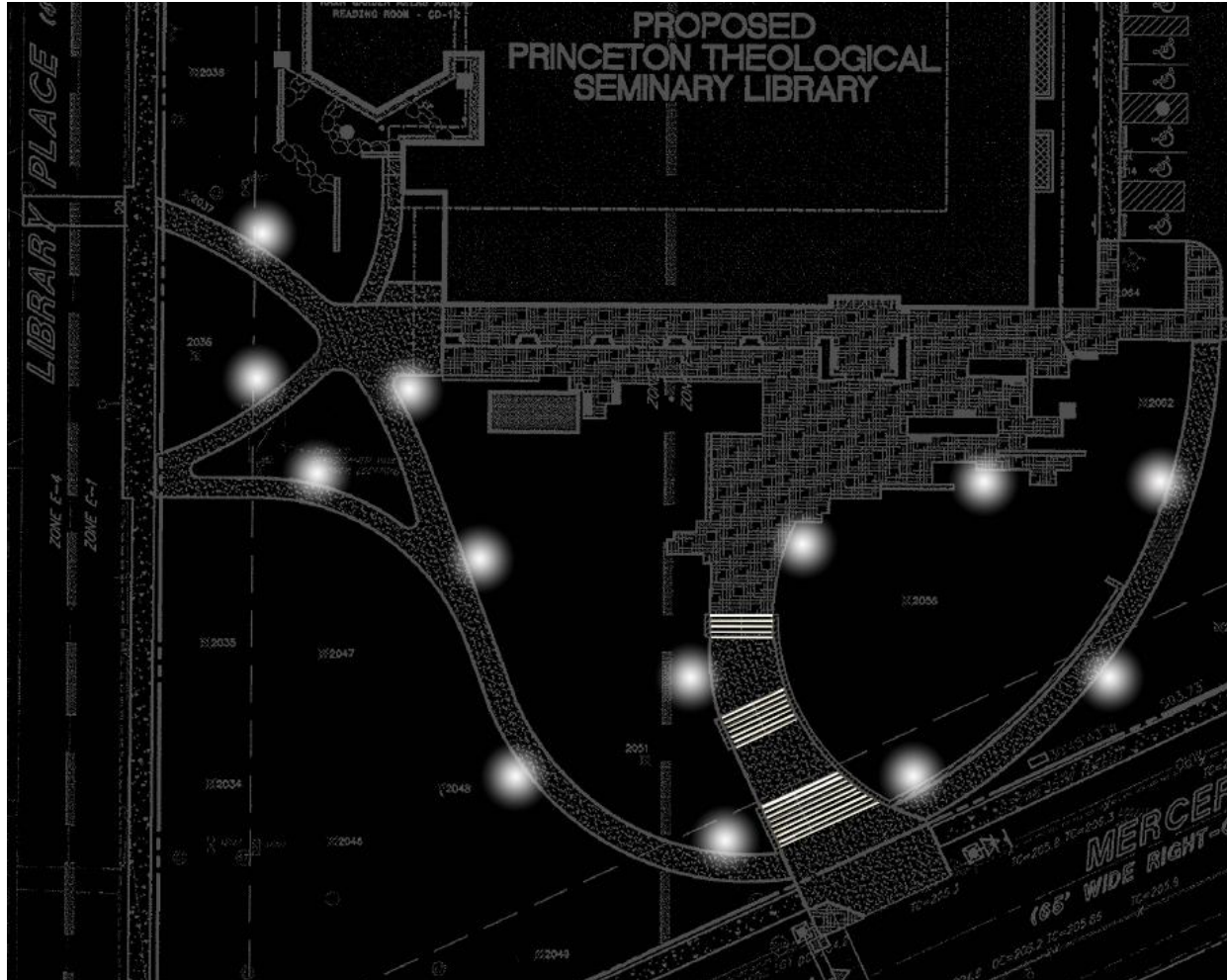


Scheme #2

- Striplight
- In-grade uplight
- Recessed linear
- Pole luminaire

Steplight

South Façade and Grounds



Scheme #2



Striplight

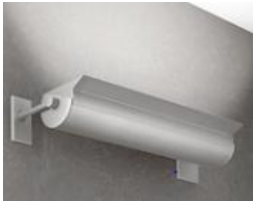
Wall-mounted uplight
Sconce
In-ground uplight
Spotlight

Building
Concept
Spaces
Reference Reading Room
Café
Atrium

South Façade and Grounds



Scheme #3



Striplight

Wall-mounted uplight

Sconce

In-ground uplight

Spotlight

Building
Concept

Spaces

Reference Reading Room

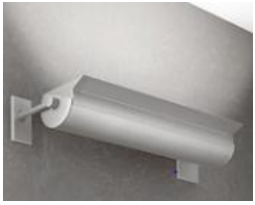
Café

Atrium

South Façade and Grounds



Scheme #3



Striplight

Wall-mounted uplight

Sconce

In-ground uplight

Spotlight

Building
Concept

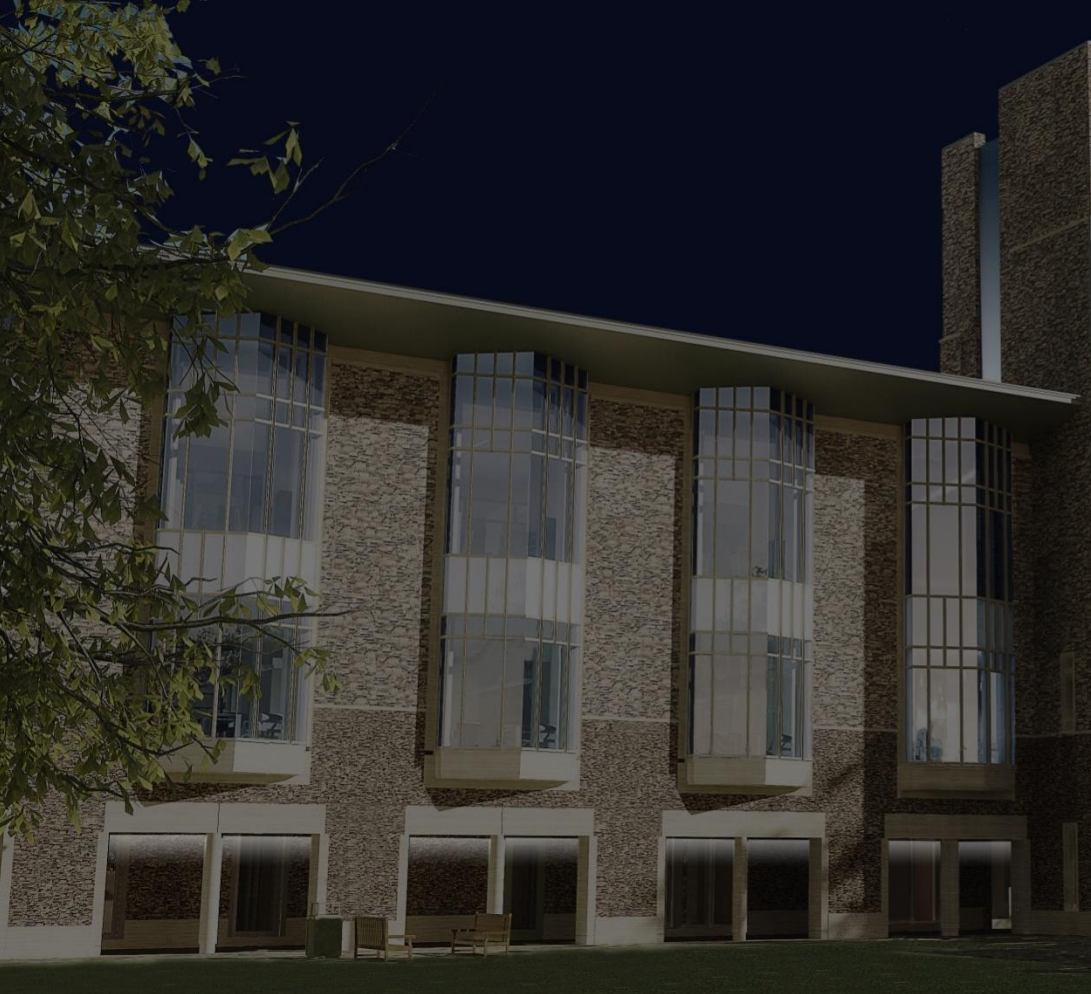
Spaces

Reference Reading Room

Café

Atrium

South Façade and Grounds



Scheme #3



Striplight
Wall-mounted uplight

Sconce

In-ground uplight
Spotlight

Building
Concept

Spaces

Reference Reading Room

Café

Atrium

South Façade and Grounds



Scheme #3



Striplight
Wall-mounted uplight
Sconce

In-ground uplight
Spotlight

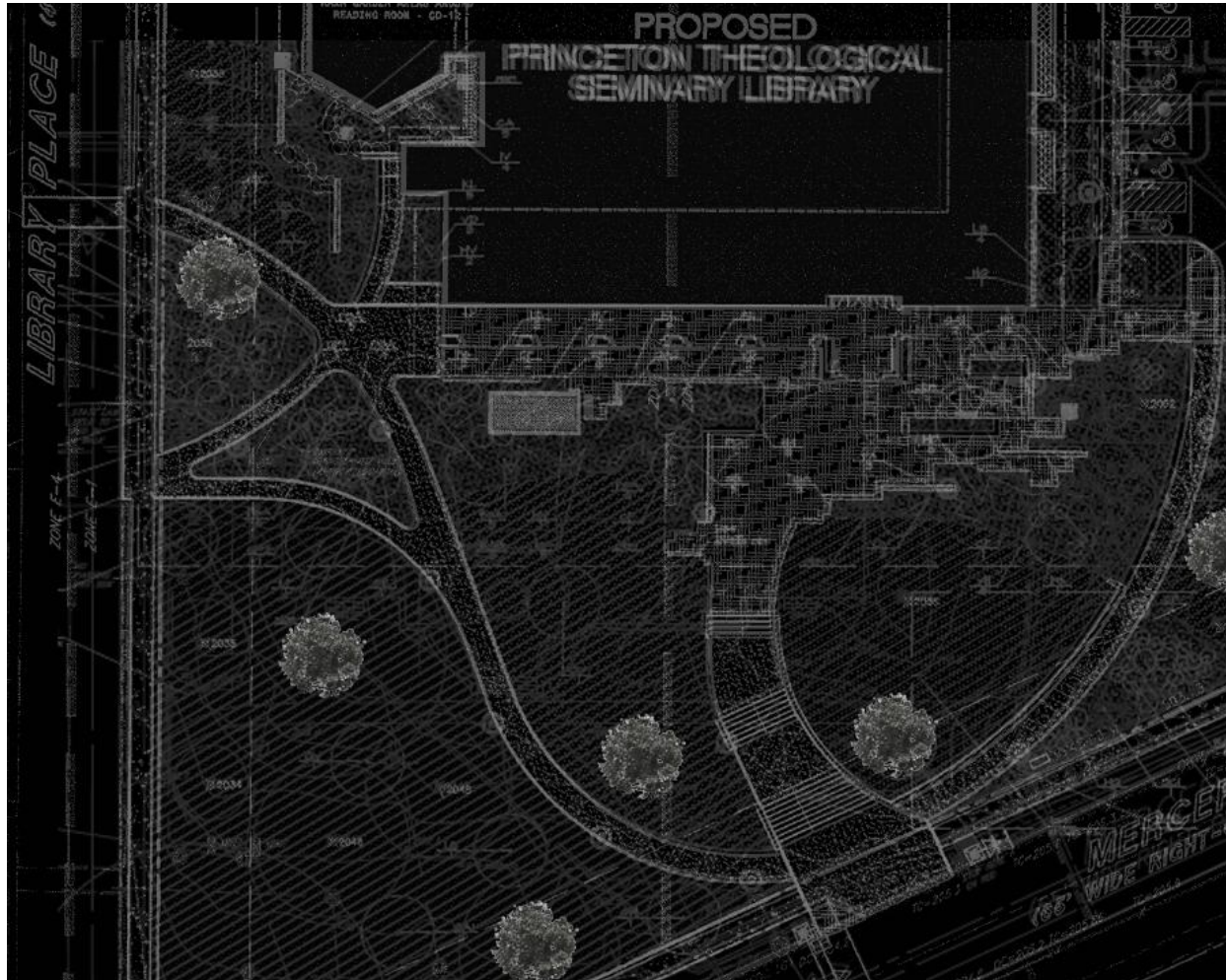
Building
Concept
Spaces
Reference Reading Room
Café
Atrium

South Façade and Grounds



Scheme #3 | Focus

South Façade and Grounds



Scheme #3



Striplight
Wall-mounted uplight
Sconce
In-ground uplight

Spotlight

Building
Concept

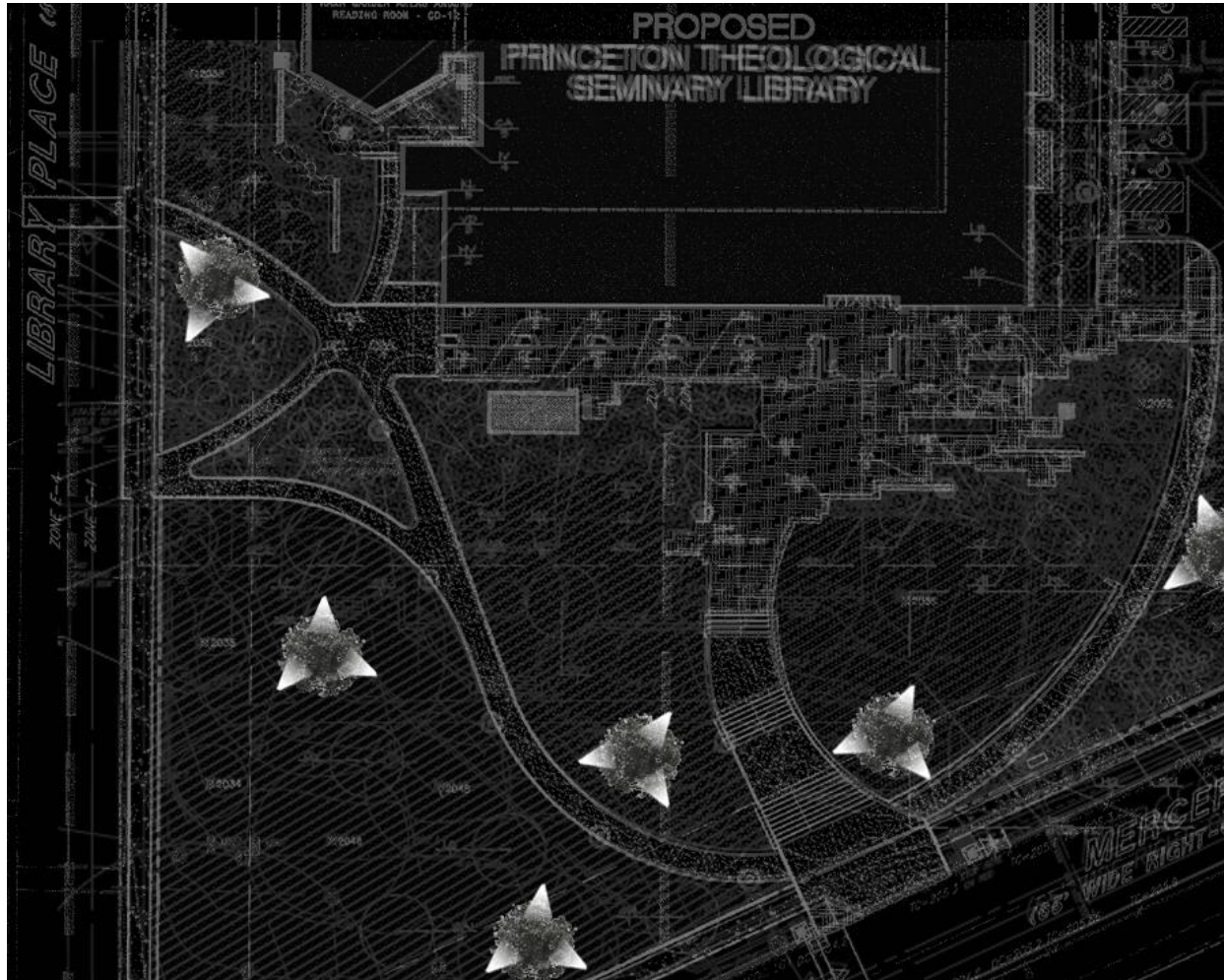
Spaces

Reference Reading Room

Café

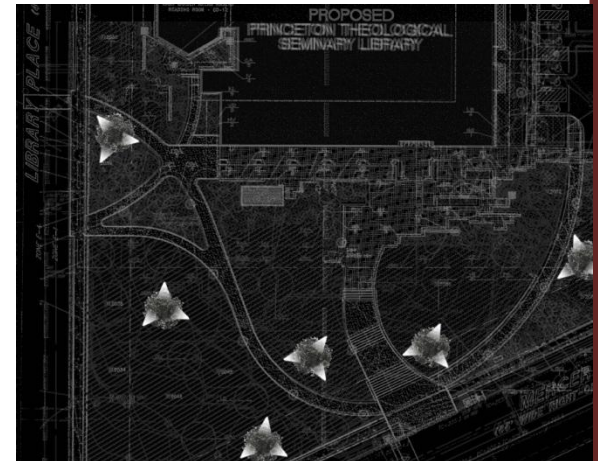
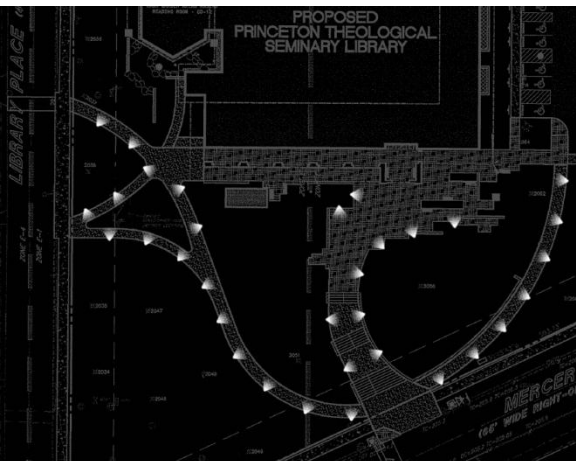
Atrium

South Façade and Grounds



Scheme #3

South Façade and Grounds



Scheme #1
Decorate

Scheme #2
Minimize

Scheme #3
Focus

Concept

Spaces

Reference Reading Room

Café

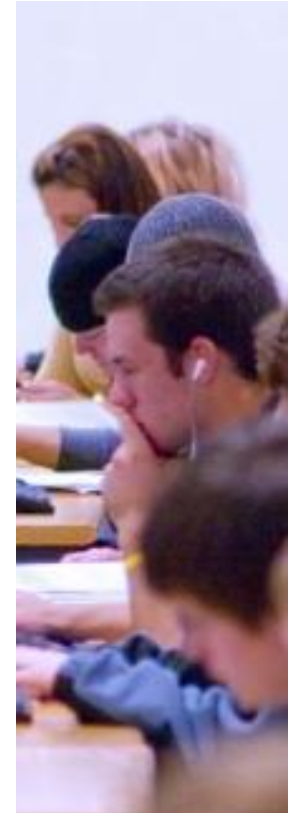
Atrium

South Façade and Grounds

Historical site/Prestigious school

Bright/daylit spaces

Hard working/functional



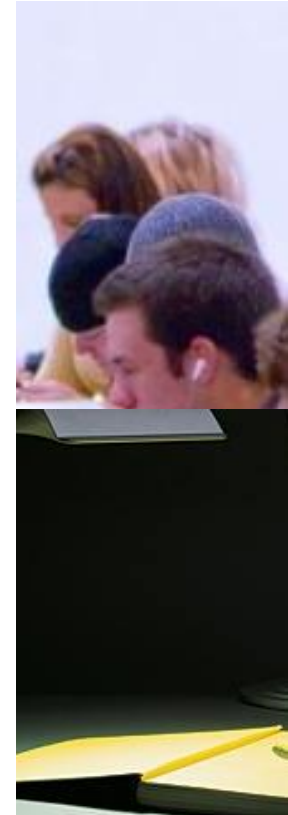
Concept

Spaces
Reference Reading Room
Café
Atrium
South Façade and Grounds

Vertical emphasis/iconic

Sparkle

Task specific



Thank you

